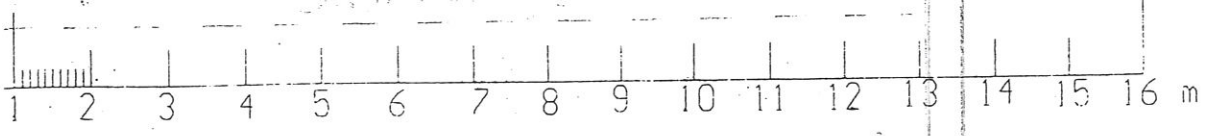


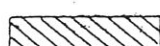

PARTER

skala 1:100 - G. Hall
 Pou-213 m² ✓
 36,0 ✓
 2 69,40

Gryfice ul. Dworcowa 23
 WODGİK Filia w Gryficach



LEGENDA:

-  WYBURZENIA (W)
-  ZAMUROWANIA (Z)

9,40

6,00

56,40

213
195

30,00

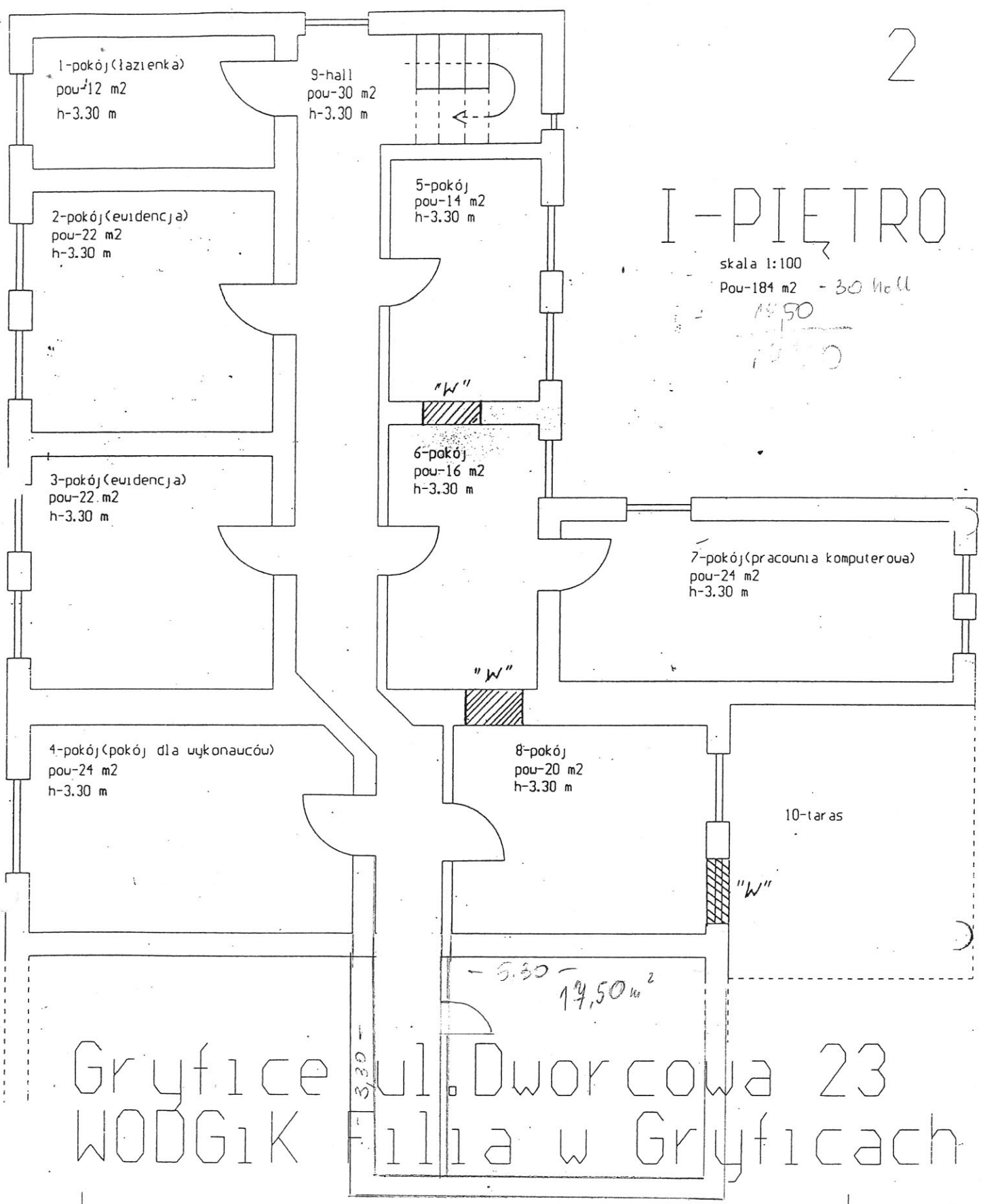
I-PIĘTRO

skala 1:100

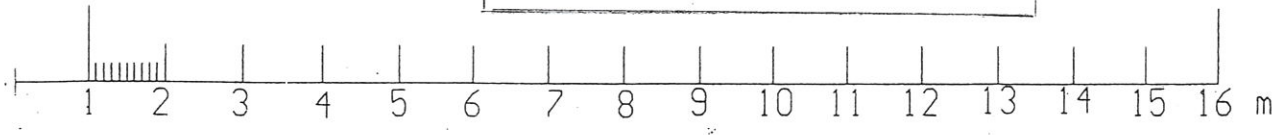
Pou-184 m² - 30 m²

1450

1450



Gryfice ul. Dworcowa 23
WODG1K Filia w Gryficach



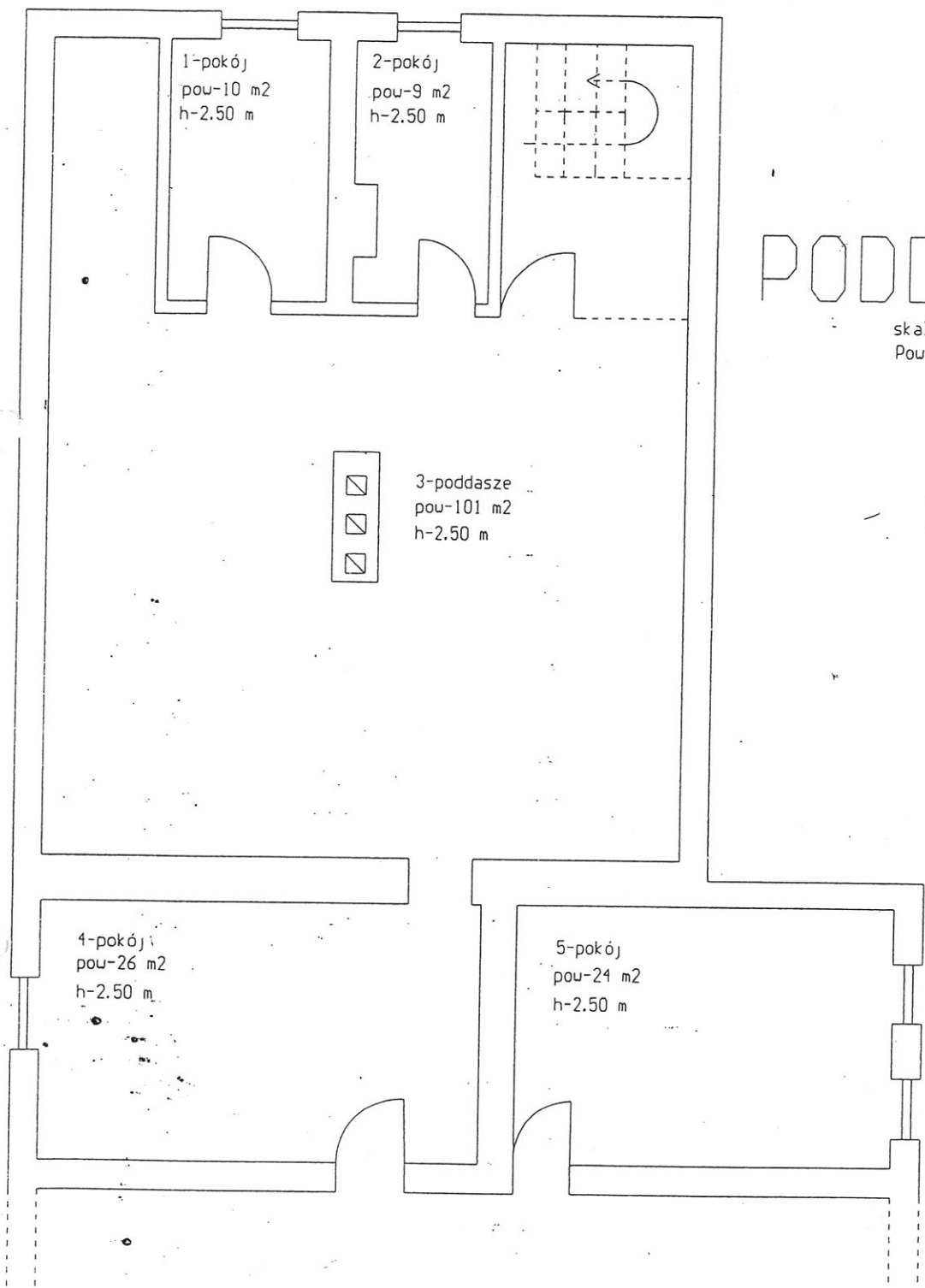
184 m²
162 m²

1450 x

3

PODDASZE

skala 1:100
Pow-170 m²

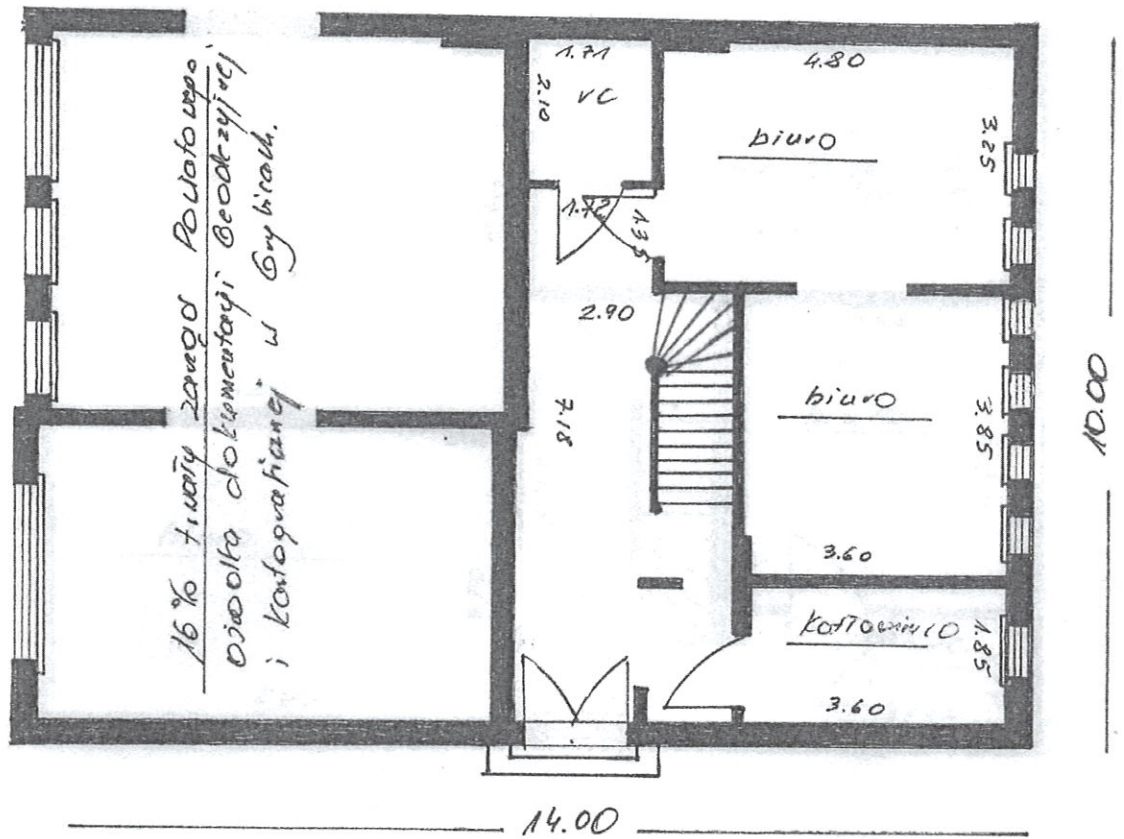


Gryfice ul. Dworcowa 23
WODG1K Filia w Gryficach

1/10/04

13/1/04²

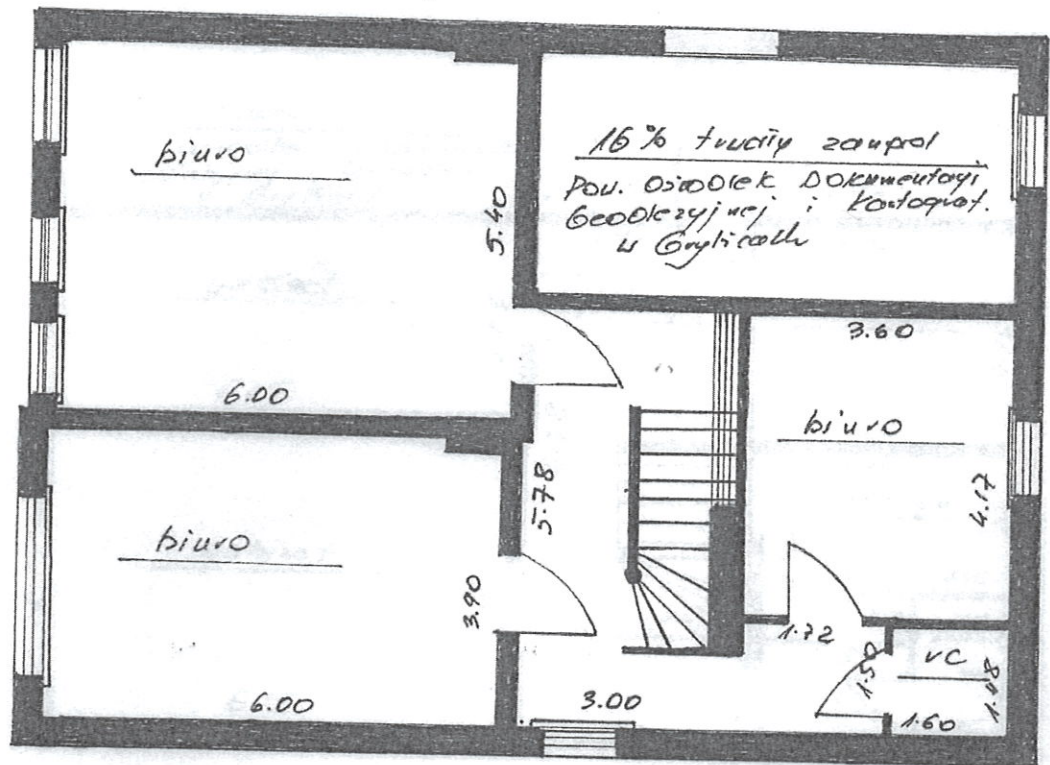
Budynek nr. 23



ul. DWORKOVA 22- parter



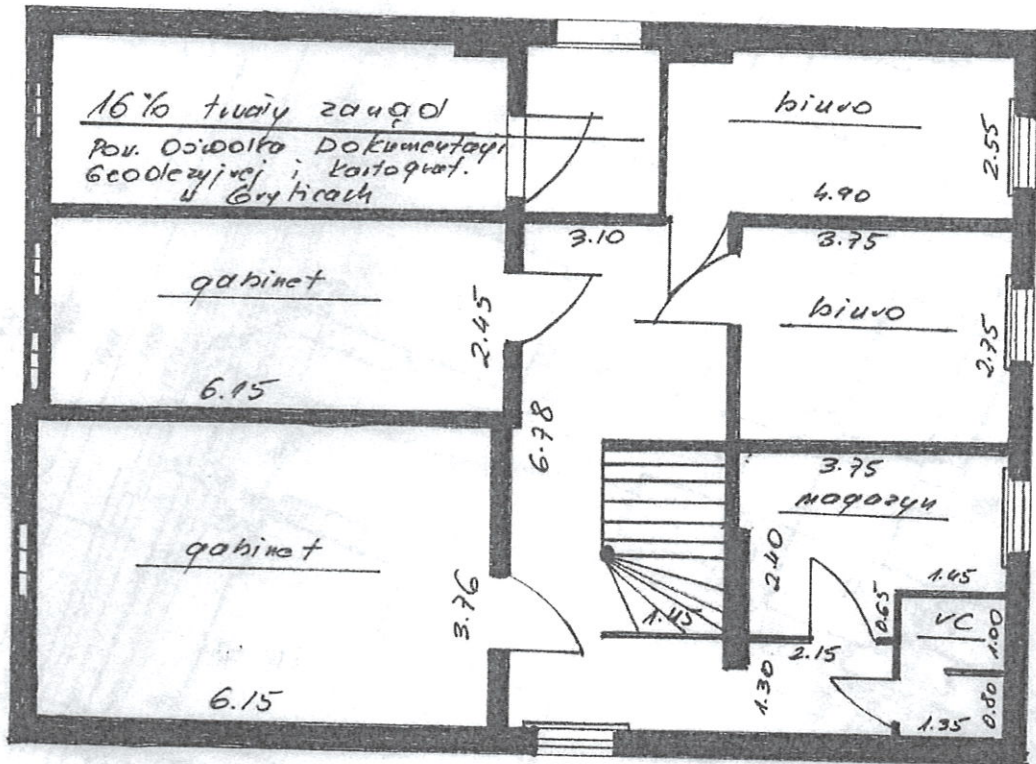
Buolynet nr 23



Ml. Dvorcova 22 - I pistro



Budynek Nr. 23



ul. Dworcowa 22 - poddasze

